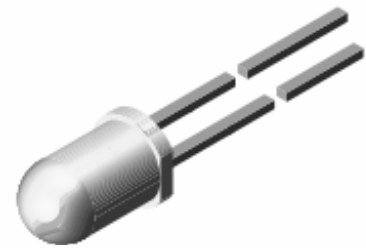


5mm Round Lamp LED

Features

- Popular T-1 3/4 diameter package
- High brightness LED
- UV resistant epoxy
- RoHS compliance



T-1 3/4



Descriptions

- The series is specially designed for applications require higher brightness than that achievable with standard lamp.
- The LED lamps are available with different colors, intensities, and epoxy colors, etc.

Applications

- Indoor/outdoor applications
- Indicator applications
- Back lighting

Device Selection Guide

Part No.	Emitted Color	Lens Color
TLH-B1R5-K1EG	Super Blue	Water Clear

5mm Round Lamp LED

TLH-B1R5-K1EG

Absolute Maximum Ratings ($T_a=25^{\circ}\text{C}$)

Parameter	Symbol	Value	Unit
Reverse Voltage	V_R	5	V
Average Forward Current (Note 1&3)	I_F	20	mA
Peak Forward Current (Note 2)	I_{FP}	50	mA
Power Dissipation	P_d	80	mW
Operating Temperature (Note 3)	T_{opr}	-40 ~ +85	$^{\circ}\text{C}$
Storage Temperature	T_{stg}	-40 ~ +100	$^{\circ}\text{C}$
LED Junction Temperature	T_J	125	$^{\circ}\text{C}$
Soldering Temperature	T_{sol}	260 / 5 seconds $^{\circ}\text{C}$	

Notes:

1. Design of heat dissipation should be considered.
2. Duty ratio=1/10, pulse width=0.1ms
3. The allowable operating current at different operation temperature, please take reference from Fig. 5 on page 3.

Electro-Optical Characteristics ($T_a=25^{\circ}\text{C}$)

Parameter	Symbol	Min.	Typ.	Max.	Unit	Condition
Luminous Intensity	I_v	3115	4360	-----	mcd	I _F =20mA
Viewing Angle	2θ_{1/2}	-----	15	-----	deg	
Dominant wavelength	λ_D	460	465	475	nm	
Forward Voltage	V_F	2.6	3.4	4.0	V	
Reverse Current	I_R	-----	-----	50	μA	V _R =5V

Notes:

4. Tolerance of Luminous Intensity: $\pm 15\%$
5. Tolerance of Dominant Wavelength: $\pm 1\text{nm}$
6. Tolerance of Forward Voltage: $\pm 0.1\text{V}$

Typical Electro-Optical Characteristics Curves ($T_a=25^\circ\text{C}$)

Fig. 1 Spectrum Distribution

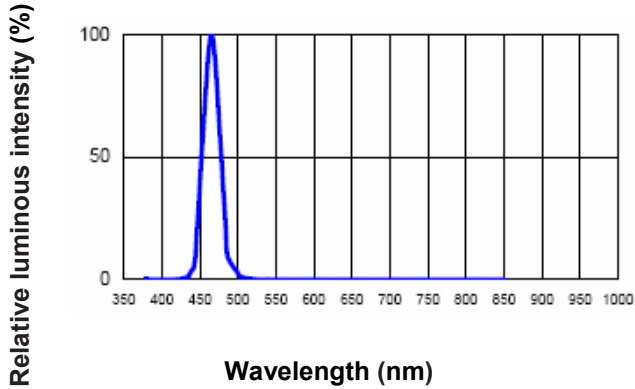


Fig.2 Forward Current vs. Forward Voltage

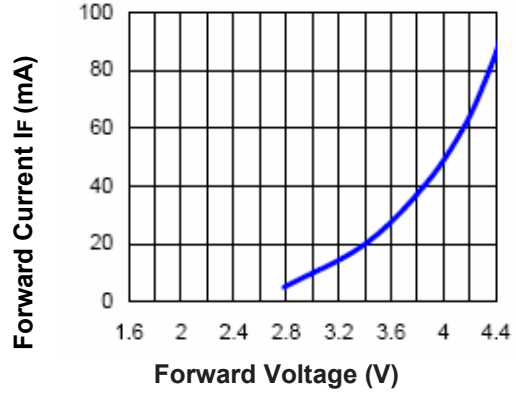


Fig.3 Luminous Intensity vs. Ambient Temperature

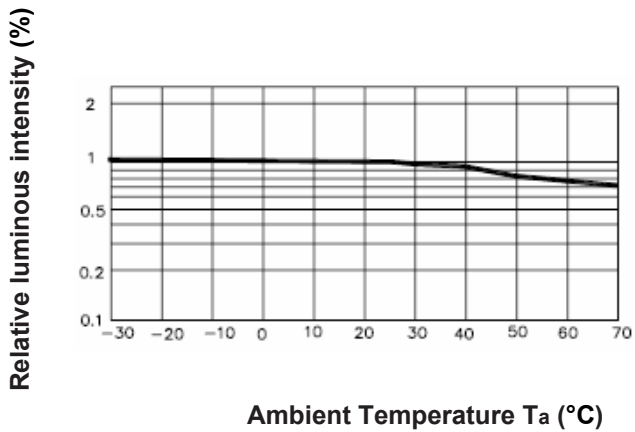


Fig.4 Luminous Intensity vs. Forward Current

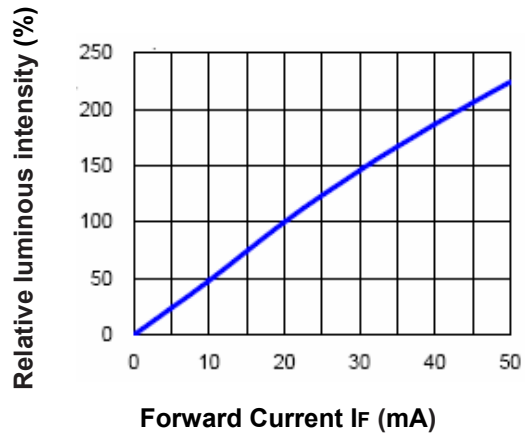


Fig.5 Forward Current Derating Curve

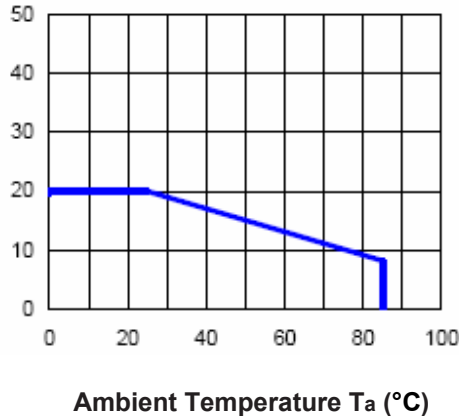
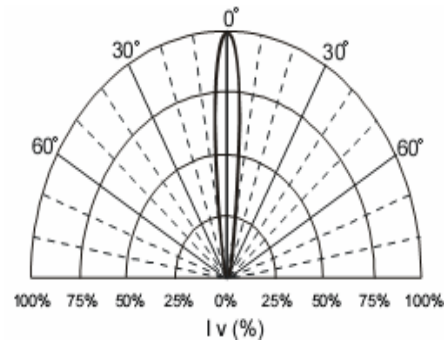
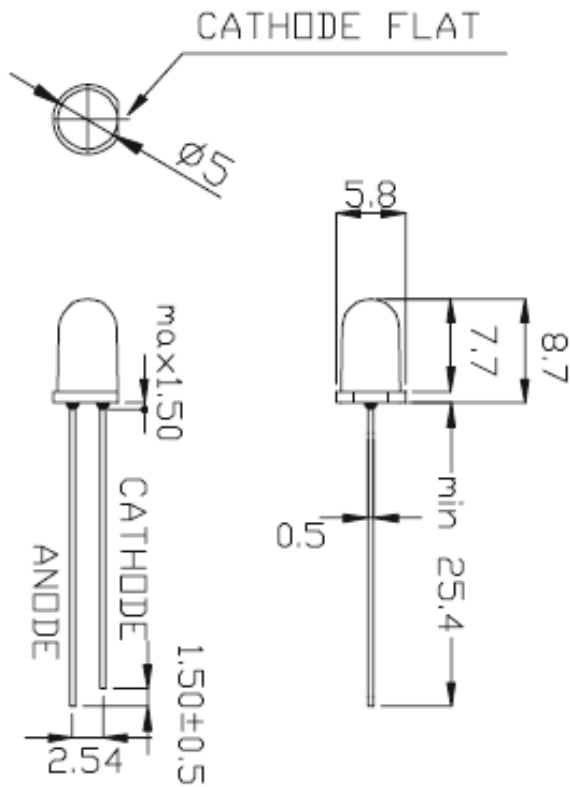


Fig.6 Radiation Diagram



Package Dimensions (In mm)



Note:

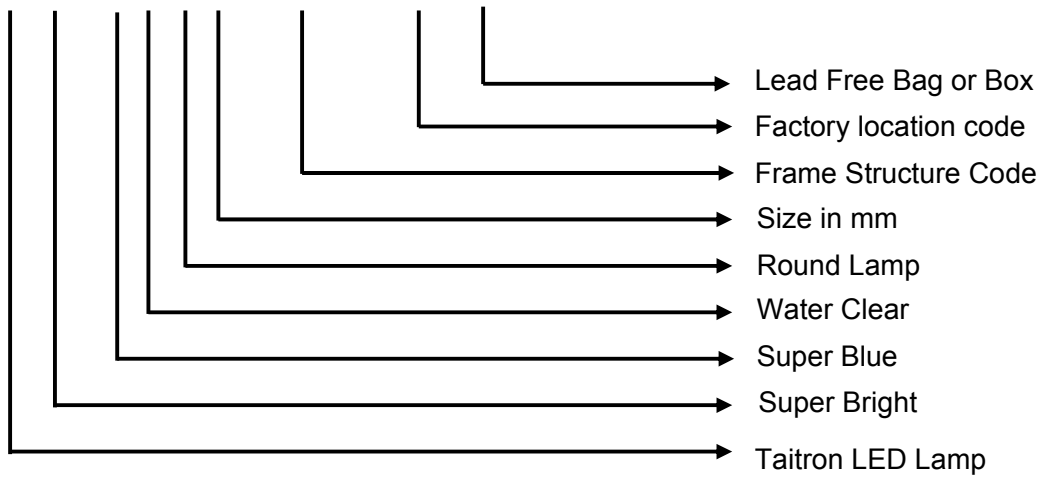
1. All dimensions are in millimeter, tolerance: ± 0.20 mm.
2. Protruded resin under bottom surface of epoxy is 1.5mm max.
3. Lead spacing is measured where the leads emerge from the package.

Packing Quantity Specification

Packing Type	PCS per Bag	PCS Per Inner Box	PCS Per Carton
Bulk	500	10,000	20,000

Ordering Information

TL H - B 1 R 5 - K1EG - 88 - BL



Rank Combination

Bin Range of Luminous Intensity

Bin	Min.	Max.	Unit	Condition
0V	3115	4360	mcd	IF =20mA
0W	4360	6105		
0X*	6105	8550		

Bin Range of Dominant Wavelength

Bin	Min.	Max.	Unit	Condition
B4	460	465	nm	IF =20mA
BJ	465	470		
BM	470	475		

Bin Range of Forward Voltage

Bin	Min.	Max.	Unit	Condition
H	2.6	3.0	V	IF =20mA
J	3.0	3.3		
K	3.3	3.6		
L	3.6	4.0		

Notes:

1. Tolerance of Luminous Intensity: $\pm 15\%$
2. Tolerance of Dominant Wavelength: $\pm 1\text{nm}$
3. Tolerance of Forward Voltage: $\pm 0.1\text{V}$
4. *Bin with less distribution

How to contact us

US HEADQUARTERS

28040 WEST HARRISON PARKWAY, VALENCIA, CA 91355-4162

Tel: (800) TAITRON (800) 247-2232 (661) 257-6060

Fax: (800) TAITFAX (800) 824-8329 (661) 257-6415

Email: taitron@taitroncomponents.com

Http://www.taitroncomponents.com

TAITRON COMPONENTS MEXICO, S.A .DE C.V.

BOULEVARD CENTRAL 5000 INTERIOR 5 PARQUE INDUSTRIAL ATITALAQUIA, HIDALGO

C.P. 42970 MEXICO

Tel: +52-55-5560-1519

Fax: +52-55-5560-2190

TAITRON COMPONETS INCORPORATED E REPRESENTAÇÕES DO BRASIL LTDA

RUA DOMINGOS DE MORAIS, 2777, 2.ANDAR, SALA 24 SAÚDE - SÃO PAULO-SP 04035-001

BRAZIL

Tel: +55-11-5574-7949

Fax: +55-11-5572-0052

TAITRON COMPONETS INCORPORATED, SHANGHAI REPRESENTATIVE OFFICE

METROBANK PLAZA,1160 WEST YAN'AN ROAD, SUITE 1503, SHANGHAI,200052, CHINA

Tel: +86-21-5424-9942

Fax: +86-21-5424-9931