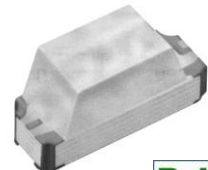


Full Color Chip LED With Right Angle Lens

Features

- Package in 8mm tape on 7" diameter reel
- Compatible with automatic placement equipment
- Compatible with infrared and vapor phase reflow solder process
- ESD protection on Blue and Green Chips
- RoHS compliance



QMLPRFRA



Applications

- Automotive: Backlighting in dashboard and switch
- Telecommunication: indicator and backlighting in telephone and fax
- Flat backlight for LCD, switches and symbols
- General use

Descriptions

- The SMD series enables smaller board size, higher packing density, reduced storage space, and small equipment
- Besides, light weight makes them ideal for miniature applications

Device Selection Guide

Part No.	Chip			Lens Color
	Color Code	Material	Emitted Color	
TFPR-QTB1FA2714	Q	AlInGaN	Super Red	Water Clear
	T	InGaN	True Green	
	B	InGaN	Blue	

Full Color Chip LED with Right Angle Lens

TFPR-QTB1FA2714

Absolute Maximum Ratings (Ta=25°C)

Parameter	Symbol	Value	Unit
Reverse Voltage	VR	5	V
Forward Current	IF	Super Red:25	mA
		True Green:25	
		Blue:25	
Peak Forward Current (Duty 1/10 @1KHz)	IFP	Super Red:60	mA
		True Green:100	
		Blue:100	
Electrostatic Discharge (HBM)	ESD	Super Red:2000	V
		True Green:2000	
		Blue:2000	
Power Dissipation	Pd	Super Red:60	mW
		True Green:110	
		Blue:110	
Soldering Temperature	Tsol	260 for 5 seconds	°C
Operating Temperature	Topr	-40 ~ +85	°C
Storage Temperature	Tstg	-40 ~ +90	°C

Full Color Chip LED with Right Angle Lens

TFPR-QTB1FA2714

Electro-Optical Characteristics:

Parameter	Symbol	Emitted Color	Min.	Typ.	Max.	Unit	Condition
Luminous Intensity	IV	Super Red	45	72	-----	mcd	IF =20mA
		True Green	112	180	-----		
		Blue	28.5	45	-----		
Viewing Angle	2θ1/2	-----	-----	120	-----	deg	
Peak Wavelength	λp	Super Red	-----	632	-----	nm	
		True Green	-----	518	-----		
		Blue	-----	468	-----		
Dominant Wavelength	λd	Super Red	615	-----	630	nm	
		True Green	510	-----	540		
		Blue	460	-----	480		
Spectrum Radiation Bandwidth	Δλ	Super Red	-----	20	-----	nm	
		True Green	-----	35	-----		
		Blue	-----	35	-----		
Forward Voltage	VF	Super Red	-----	2.0	2.4	V	
		True Green	-----	3.4	3.9		
		Blue	-----	3.4	3.9		
Reverse Current	IR	Super Red	-----	-----	10	μA	VR=5V
		True Green	-----	-----	-----		
		Blue	-----	-----	-----		

Notes: Tolerance of Luminous Intensity ±10%

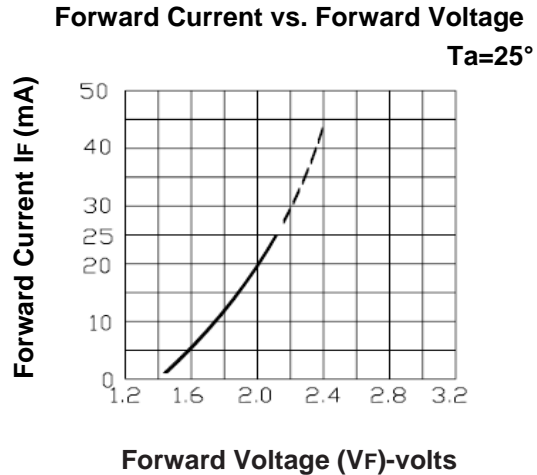
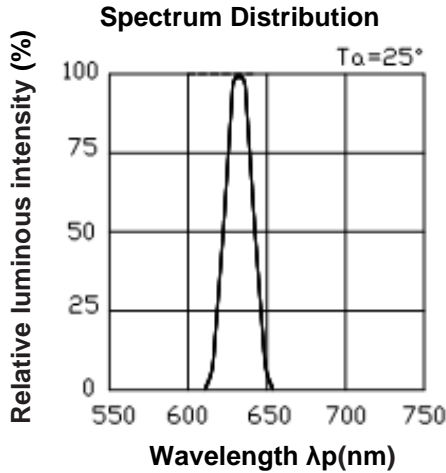
Tolerance of Dominant wavelength ±1nm

Tolerance of Forward Voltage ±0.05V

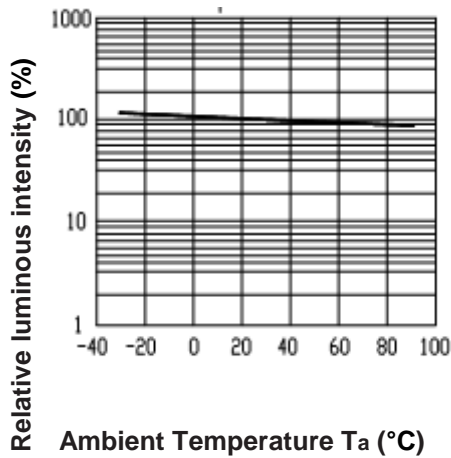
Full Color Chip LED with Right Angle Lens

TFPR-QTB1FA2714

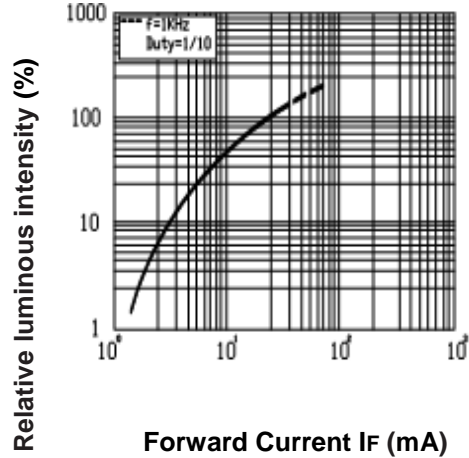
Typical Electro-Optical Characteristics Curves (Red)



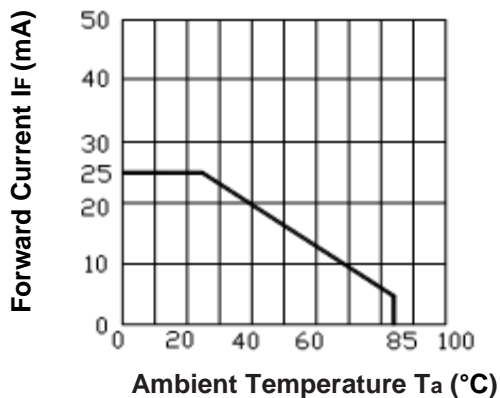
Luminous Intensity vs. Ambient Temperature



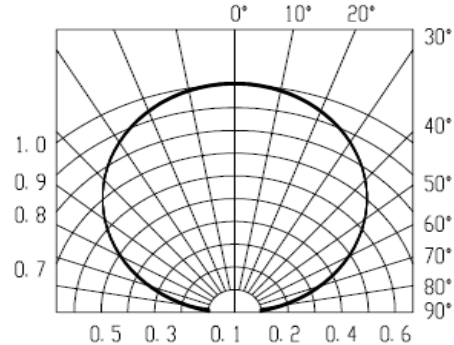
Luminous Intensity vs. Forward Current
 $T_a = 25^\circ$



Forward Current Derating Curve



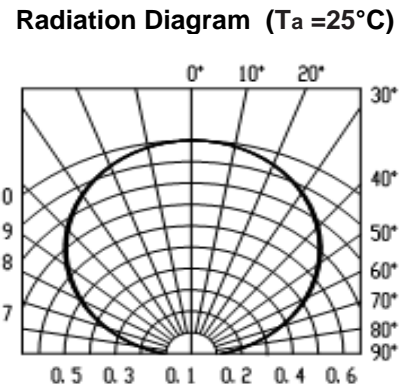
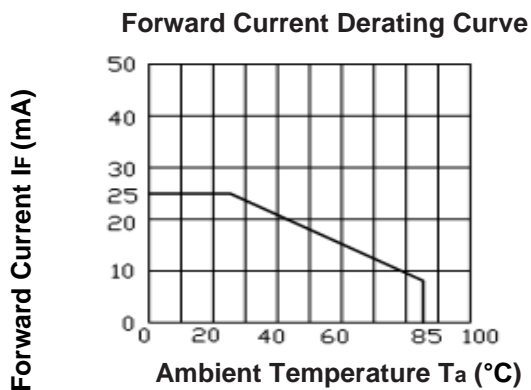
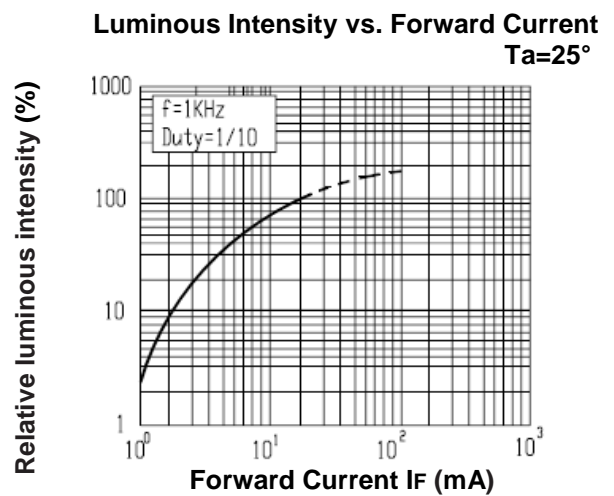
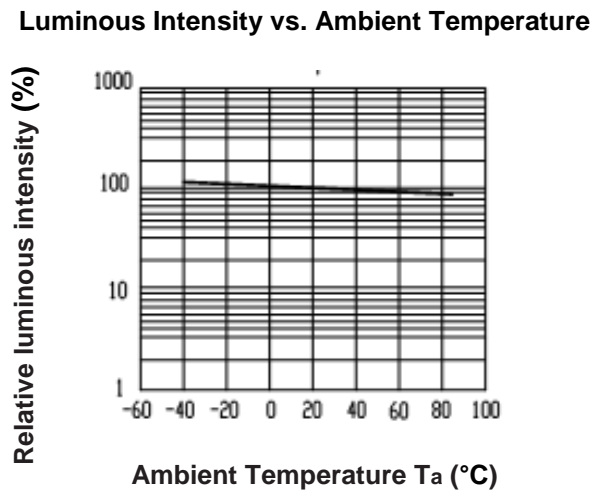
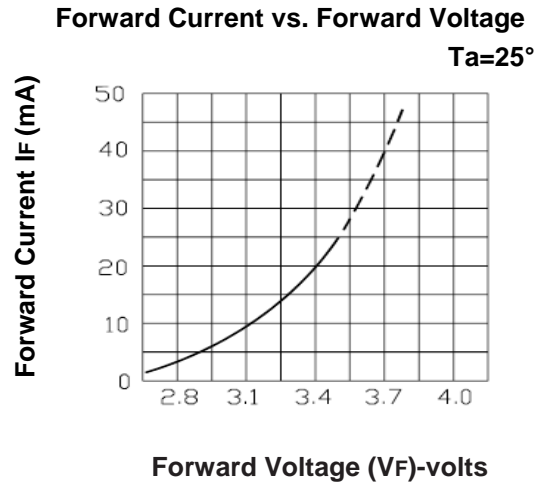
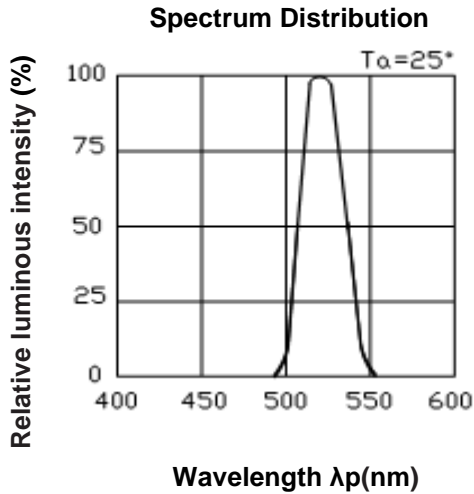
Radiation Diagram ($T_a = 25^\circ\text{C}$)



Full Color Chip LED with Right Angle Lens

TFPR-QTB1FA2714

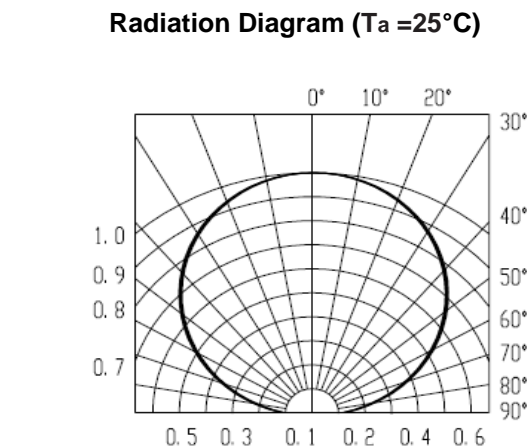
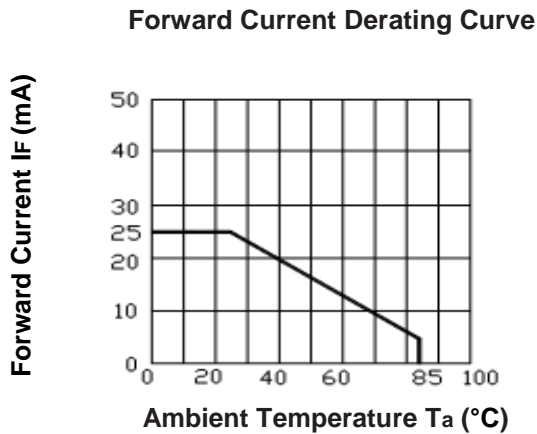
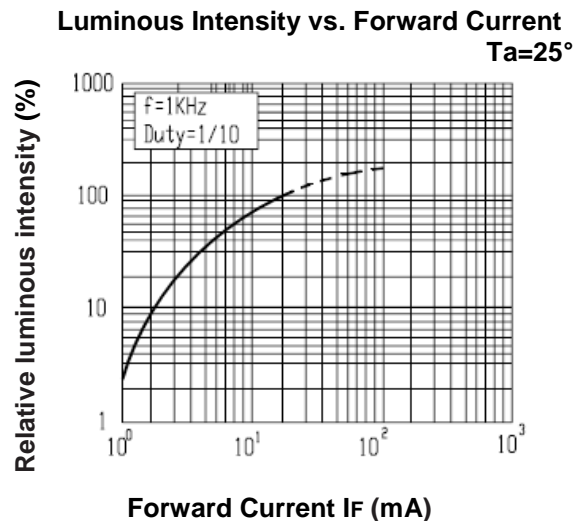
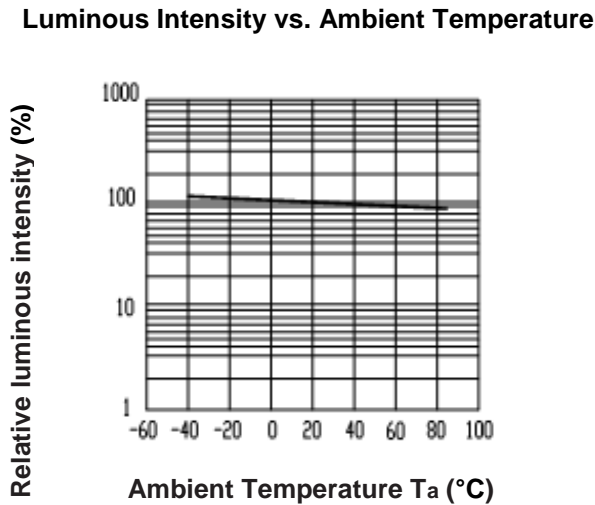
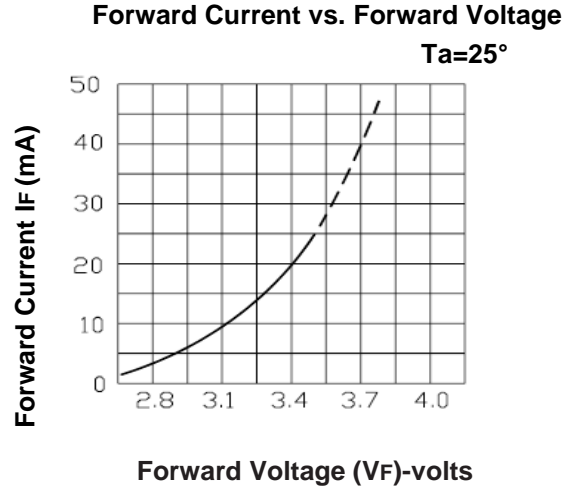
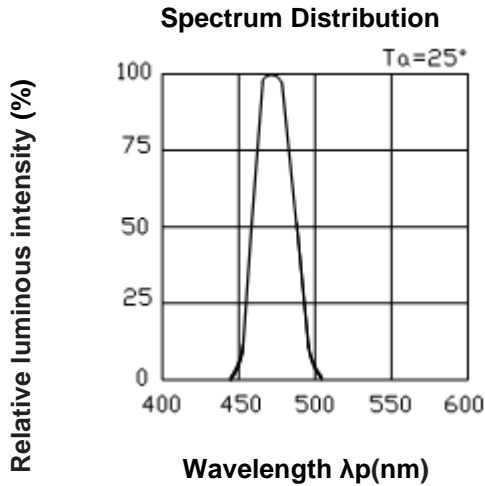
Typical Electro-Optical Characteristics Curves (True Green)



Full Color Chip LED with Right Angle Lens

TFPR-QTB1FA2714

Typical Electro-Optical Characteristics Curves (Blue)



Full Color Chip LED with Right Angle Lens

TFPR-QTB1FA2714

Reliability Test Items and Conditions

The reliability of products shall be satisfied with items listed below.

Confidence level: 90%,

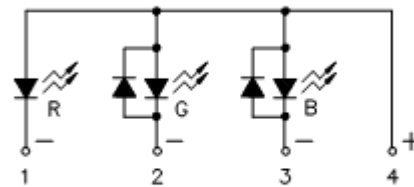
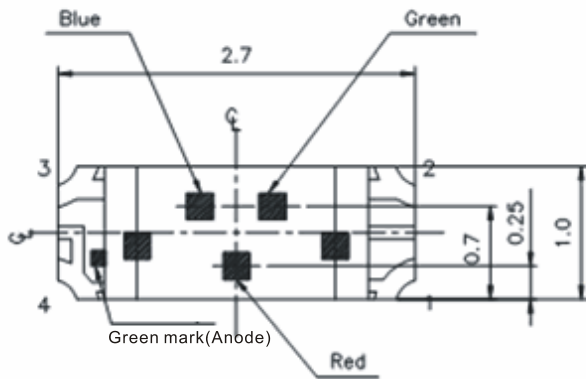
LTPD: 10%

No.	Item	Test Conditions	Test Hours/Cycle	Sample Size	Ac/Re
1	Reflow Soldering	Temp : 240°C ±5°C for 5sec	6 min	22 PCS	0/1
2	Temperature Cycle	H : +100°C for 15min ┆ 5 min L : -40°C for 15min	300 Cycles	22 PCS	0/1
3	Thermal Shock	H : +100°C for 5min ┆ 10 sec L : -10°C for 5min	300 Cycles	22 PCS	0/1
4	High Temperature Storage	Temp : 100°C	1000 Hrs	22 PCS	0/1
5	Low Temperature Storage	Temp : -40°C	1000 Hrs	22 PCS	0/1
6	DC Operating Life	If = 20 m A	1000 Hrs	22 PCS	0/1
7	High Temperature / High Humidity	85°C / R.H85%	1000 Hrs	22 PCS	0/1

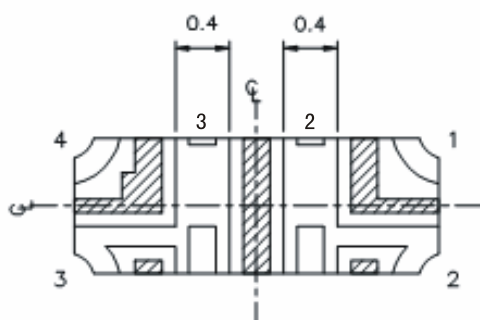
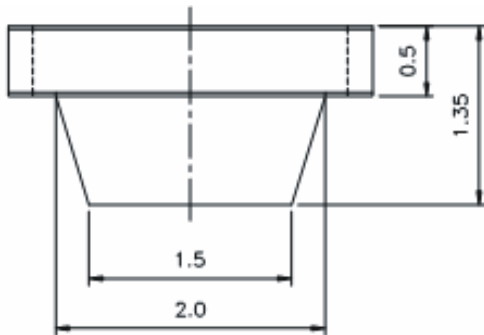
Full Color Chip LED with Right Angle Lens

TFPR-QTB1FA2714

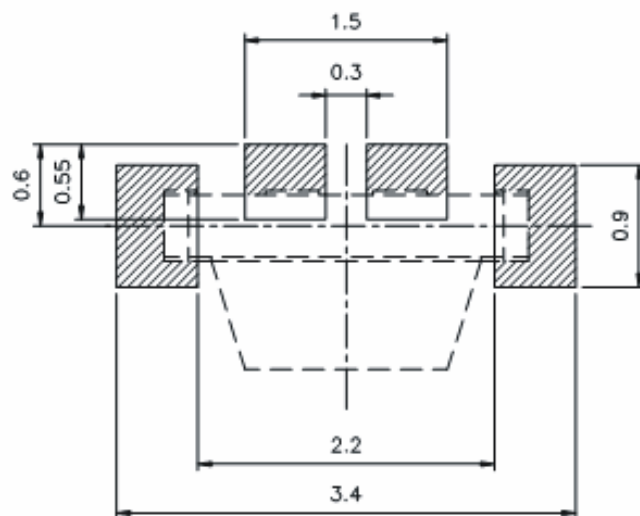
Package Outline Dimensions



Polarity



For reflow soldering (propose)

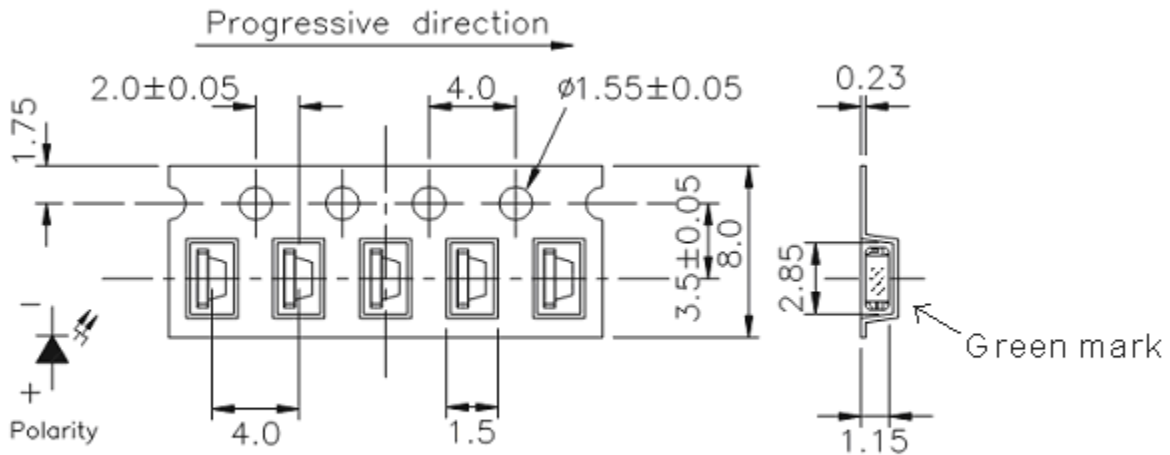


Note: The tolerances unless mentioned is $\pm 0.1\text{mm}$, Unit = mm

Full Color Chip LED with Right Angle Lens

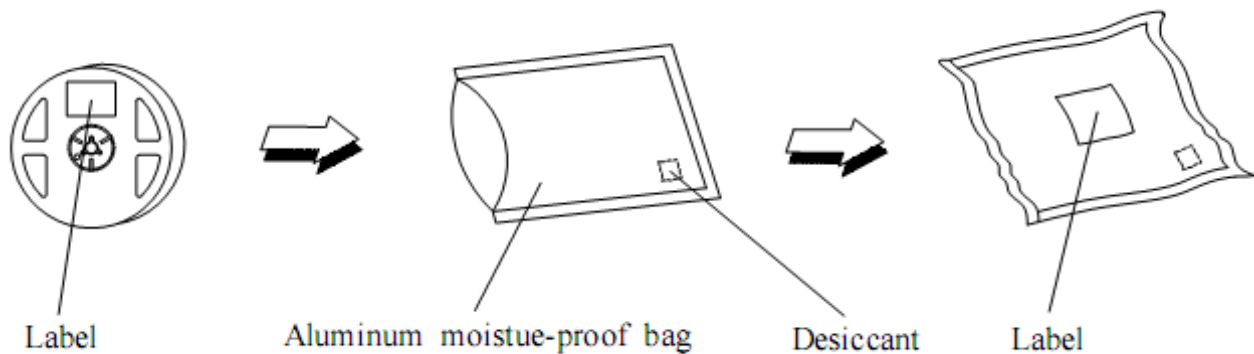
TFPR-QTB1FA2714

Carrier Tape Dimensions: Loaded quantity 2000pcs per reel



Note: The tolerances unless mentioned is $\pm 0.1\text{mm}$, Unit = mm

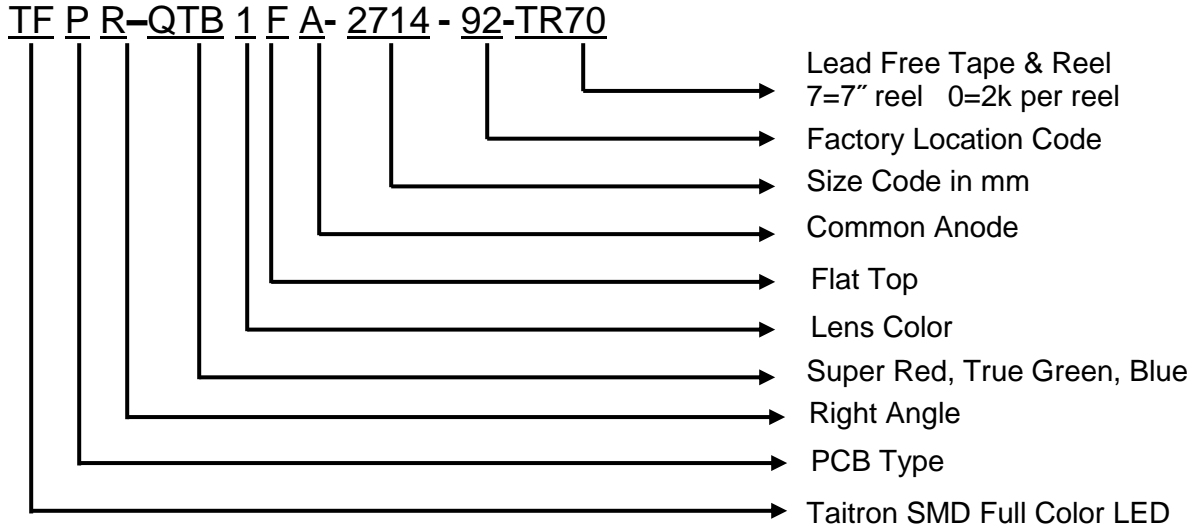
Moisture Resistant Packaging



Full Color Chip LED with Right Angle Lens

TFPR-QTB1FA2714

Ordering Information

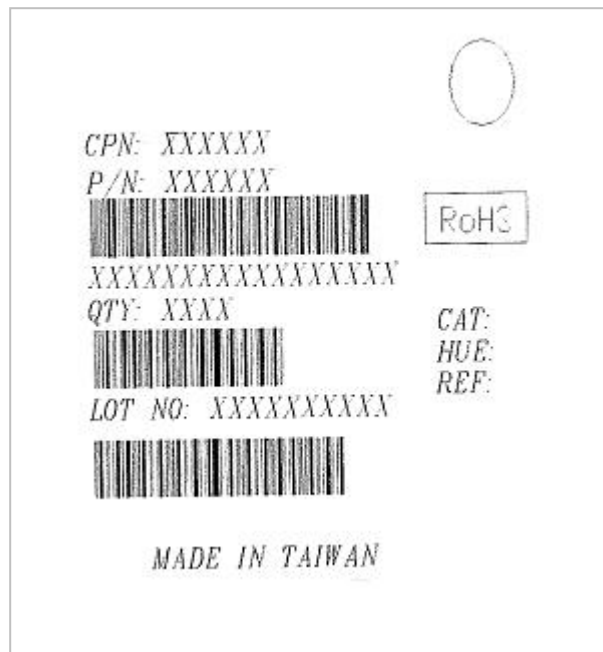


Label Explanation

CAT: Luminous Intensity Rank

HUE: Dom. Wavelength Rank

REF: Forward Voltage Rank



Full Color Chip LED with Right Angle Lens

TFPR-QTB1FA2714

How to contact us

USA HEADQUARTERS

28040 WEST HARRISON PARKWAY, VALENCIA, CA 91355-4162

Tel: (800)-TAITRON (800)-824-8766 (661)-257-6060

Fax: (800)-TAITFAX (800)-824-8329 (661)-257-6415

Email: taitron@taitroncomponents.com

Http://www.taitroncomponents.com

TAITRON COMPONENTS INCORPORATED TAIWAN BRANCH

6F., NO.190, SEC. 2, ZHONGXING RD., XINDIAN DIST., NEW TAIPEI CITY 23146, TAIWAN R.O.C.

Tel: 886-2-2913-6238

Fax: 886-2-2913-6239

TAITRON COMPONENT TECHNOLOG SHANGHAI CORPORATION

SUITE 1503, METROBANK PLAZA, 1160 WEST YAN'AN ROAD, SHANGHAI, 200052, CHINA

Tel: +86-21-5424-9942

Fax: +86-21-2302-5027