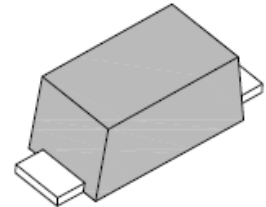


1.0A Surface Mount Low V_F Schottky Rectifier

Features

- Low profile surface mount package
- Low power loss, High efficiency
- For use in low voltage
- High frequency inverters
- RoHS compliant



SOD-123F



Application

- Switching power supply
- Reverse battery connection protection
- DC/DC converter
- Cellular phones

Mechanical Data

Case:	SOD-123F, Molded plastic body
Terminals:	Solder plated, solderable per MIL-STD-750, Method 2026
Polarity:	Cathode mark on the body
Weight:	0.0173 gram

Maximum Ratings & Electrical Characteristics ($T_{Ambient}=25^{\circ}C$ unless noted otherwise)

Symbol	Description	MFLS13L	Unit	Conditions
	Marking Code	13L		
VRRM	Max. Repetitive Peak Reverse Voltage	30	V	
IF(AV)	Max. Forward Average Output Rectified Current	1.0	A	
IFSM	Peak Forward Surge Current	22	A	Non-Repetitive 60Hz
VF	Max. Forward Voltage	0.36	V	IF=1.0A
IR	Repetitive Peak Reverse Current	1.0	mA	VR=Rated
RthJA	Typical Thermal Resistance from Junction to Ambient	140	$^{\circ}C/W$	on a grass-epoxy board
RthJL	Typical Thermal Resistance from Junction to Lead	20	$^{\circ}C/W$	
TJ, TSTG	Junction and Storage Temperature Range	-40 to +125	$^{\circ}C$	

1.0A Surface Mount Low V_F Schottky Rectifier

MFLS13L

Typical Characteristics Curves

Fig.1- Typical Instantaneous Forward Characteristics

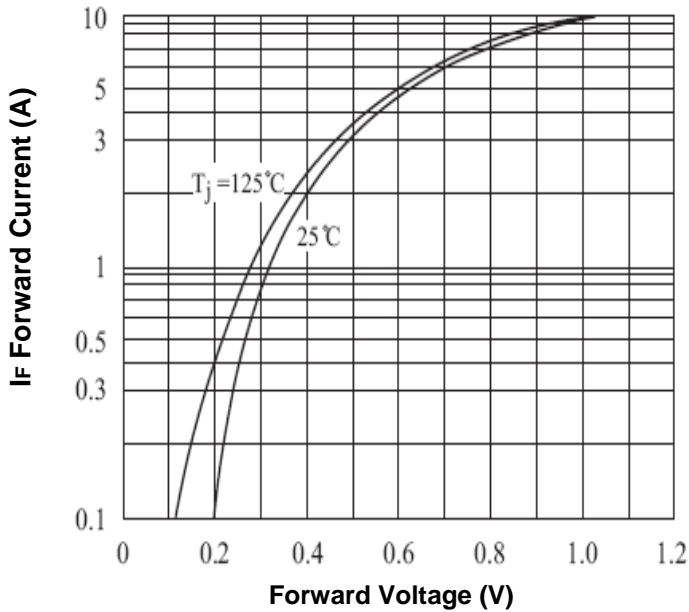


Fig.2- $P_{F(AV)} - I_{F(AV)}$

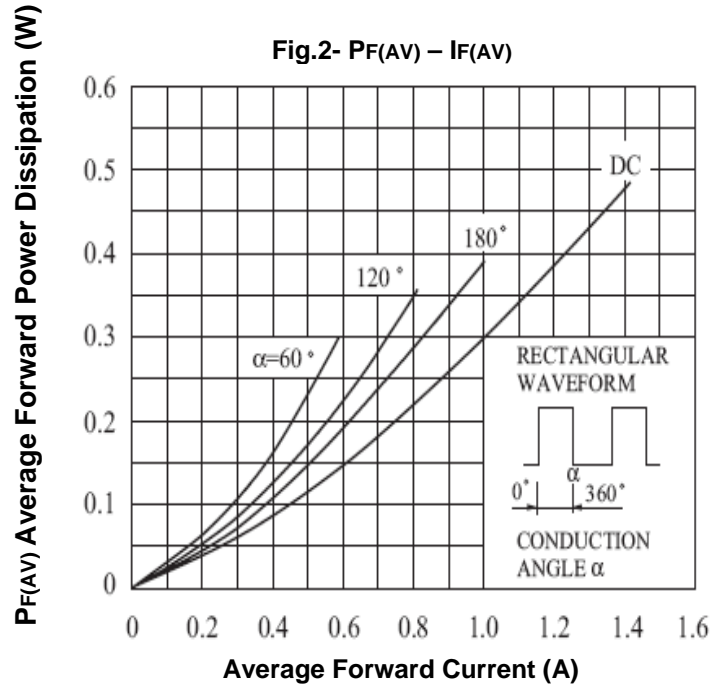


Fig.3- Surge Forward Current (Non-Repetitive)

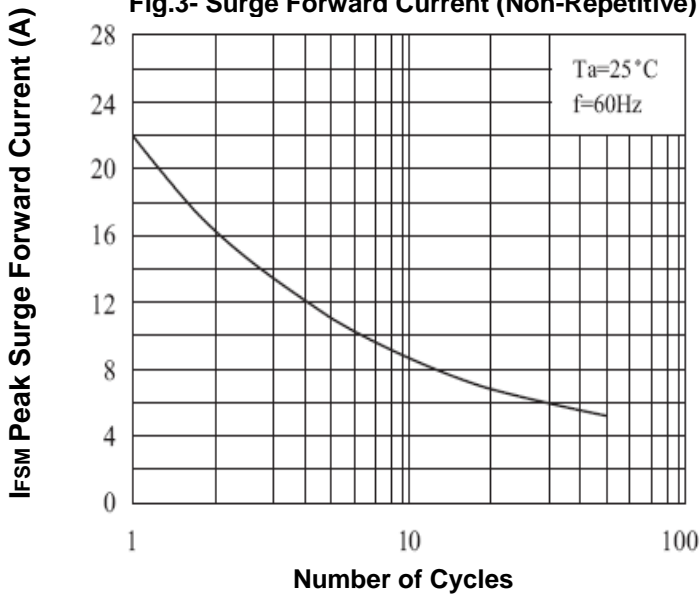
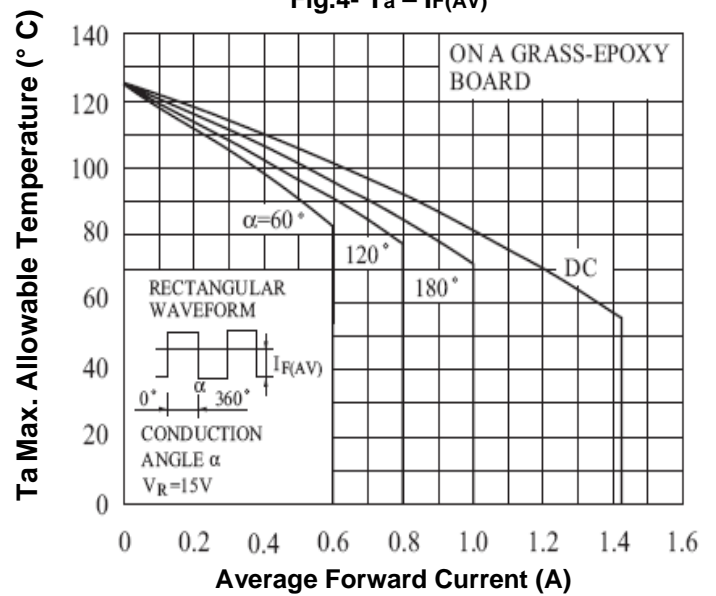


Fig.4- $T_a - I_{F(AV)}$



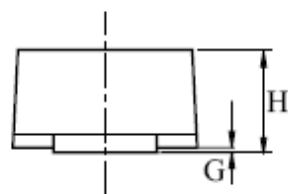
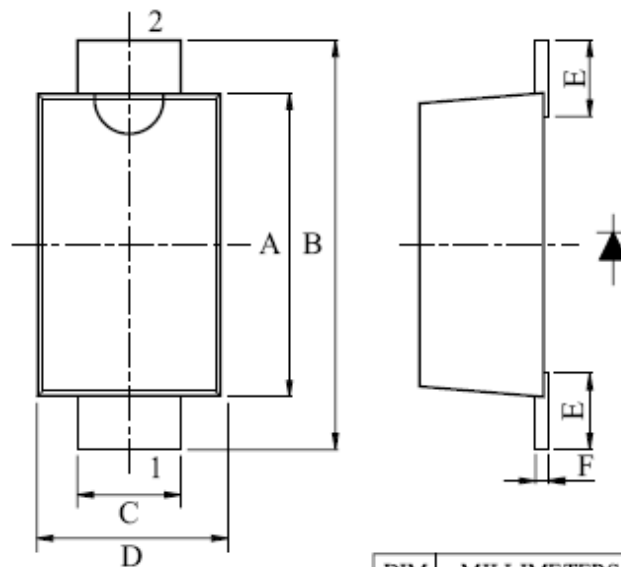
1.0A Surface Mount Low V_F Schottky Rectifier

MFLS13L

Marking Information:



Dimensions in mm



- 1. ANODE
- 2. CATHODE

DIM	MILLIMETERS
A	2.6±0.05
B	3.5±0.1
C	0.9±0.05
D	1.6±0.05
E	0.65±0.05
F	0.11±0.05
G	0 ~ 0.1
H	0.98±0.05

SOD-123F

1.0A Surface Mount Low V_F Schottky Rectifier

MFLS13L

How to contact us:

US HEADQUARTERS

28040 WEST HARRISON PARKWAY, VALENCIA, CA 91355-4162

Tel: (800) TAITRON (800) 824-8766 (661) 257-6060

Fax: (800) TAITFAX (800) 824-8329 (661) 257-6415

Email: taitron@taitroncomponents.com

Http://www.taitroncomponents.com

TAITRON COMPONENTS MEXICO, S.A .DE C.V.

BOULEVARD CENTRAL 5000 INTERIOR 5 PARQUE INDUSTRIAL ATITALAQUIA, HIDALGO C.P.
42970 MEXICO

Tel: +52-55-5560-1519

Fax: +52-55-5560-2190

TAITRON COMPONENTS INCORPORATED REPRESENTAÇÕES DO BRASIL LTDA

RUA DOMINGOS DE MORAIS, 2777, 2.ANDAR, SALA 24 SAÚDE - SÃO PAULO-SP 04035-001 BRAZIL

Tel: +55-11-5574-7949

Fax: +55-11-5572-0052

TAITRON COMPONENTS INCORPORATED, SHANGHAI REPRESENTATIVE OFFICE

METROBANK PLAZA, 1160 WEST YAN' AN ROAD, SUITE 1503, SHANGHAI, 200052, CHINA

Tel: +86-21-5424-9942

Fax: +86-21-5424-9931