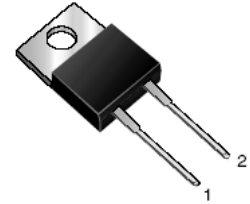


7.5A Schottky Barrier Rectifiers

Features

- Plastic package has Underwriters Laboratory Flammability Classifications 94V-0
- Metal silicon junction, majority carrier conduction
- Lower power losses, high efficiency
- Guarding for over voltage protection
- Low forward voltage drop
- High forward surge capability
- High frequency operation
- For use in low voltage, high frequency inverters, free wheeling, and polarity protection applications



TO-220AC

Mechanical Data

Case:	JEDEC TO-220AC, molded plastic body
Terminals:	Plated leads, solderable per MIL-STD-750, Method 2026
Polarity	As marked
Mounting Position:	Any
Mounting Torque:	10 in-lbs maximum
Weight:	0.08 ounce, 2.24 grams

Maximum Ratings ($T_{Ambient}=25^{\circ}C$ unless noted otherwise)

Symbol	Description	MBR735	MBR745	MBR750	MBR760	Unit	Conditions
V_{RRM}	Maximum Repetitive Peak Reverse Voltage	35	45	50	60	V	
V_{RWM}	Working Peak Reverse Voltage	35	45	50	60	V	
V_{DC}	Maximum DC Blocking Voltage	35	45	50	60	V	
I_{F(AV)}	Maximum Average Forward Rectified Current	7.5				A	See Fig.1
I_{FSM}	Peak Forward Surge Current	150				A	8.3ms single half sine-wave superimposed on rated load (JEDEC Method)
T_J	Operating Junction Temperature Range	-65 to +150				° C	
T_{STG}	Storage Temperature Range	-65 to +175				° C	

7.5A Schottky Barrier Rectifiers

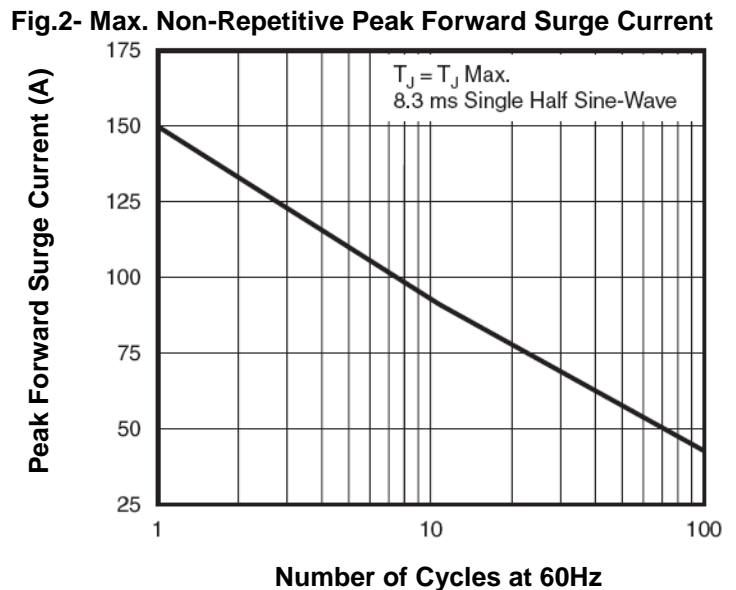
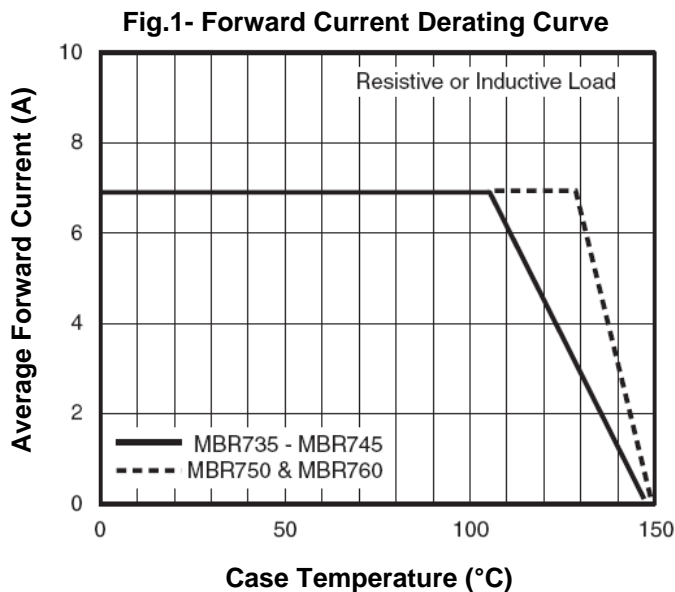
MBR735 - MBR760

Electrical Characteristics ($T_{Ambient}=25^{\circ}\text{C}$ unless noted otherwise)

Symbol	Description	MBR735	MBR745	MBR750	MBR760	Unit	Conditions
V_F	Maximum Instantaneous Forward Voltage (Note 1)	-		0.75		V	IF=7.5A, TC=25 °C
		0.57		0.65			IF=7.5A, TC=125 °C
		0.84		-			IF=15A, TC=25 °C
		0.72		-			IF=15A, TC=125 °C
I_R	Maximum Instantaneous Reverse Current at rated DC Blocking Voltage	0.1		0.5		mA	TC=25 °C
		15		50			TC=125°C
$R_{\theta\text{-JC}}$	Maximum Thermal Resistance from Junction to Case	3.0				°C/W	

Note 1: Pulse test: 300µs pulse width, 1% duty cycle.

Typical Characteristics Curves



7.5A Schottky Barrier Rectifiers

MBR735 - MBR760

Fig.3- Typical Instantaneous Forward Characteristics

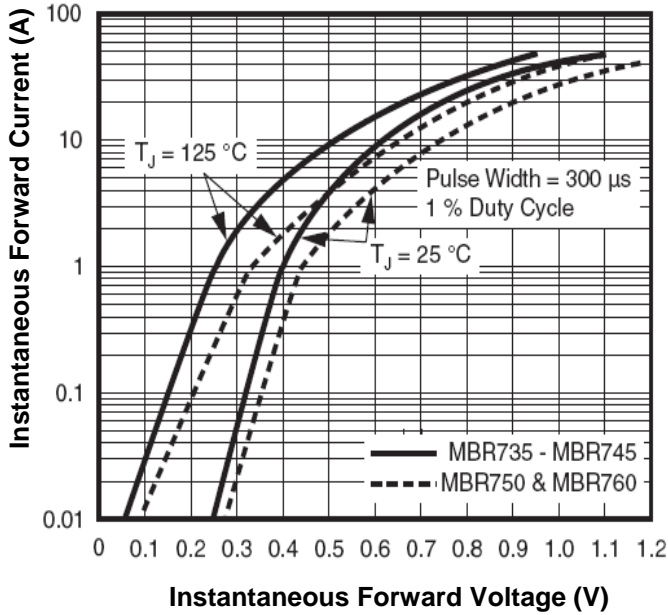


Fig.4- Typical Reverse Characteristics

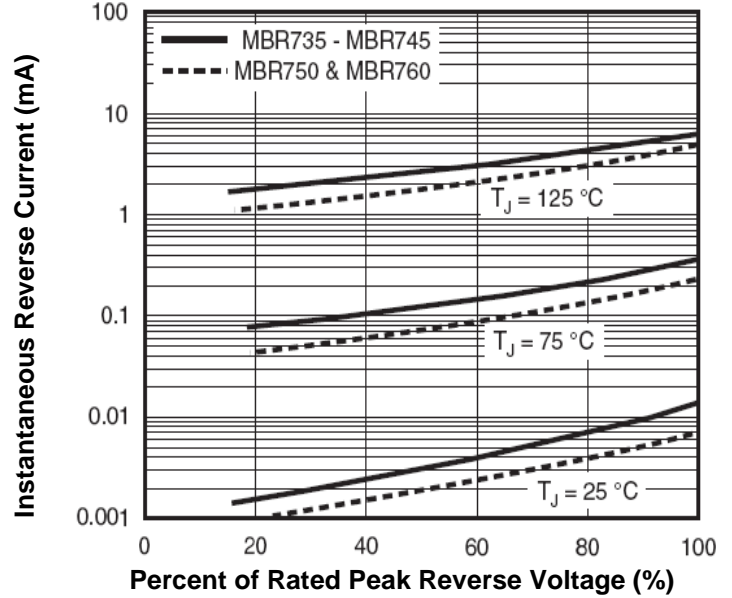
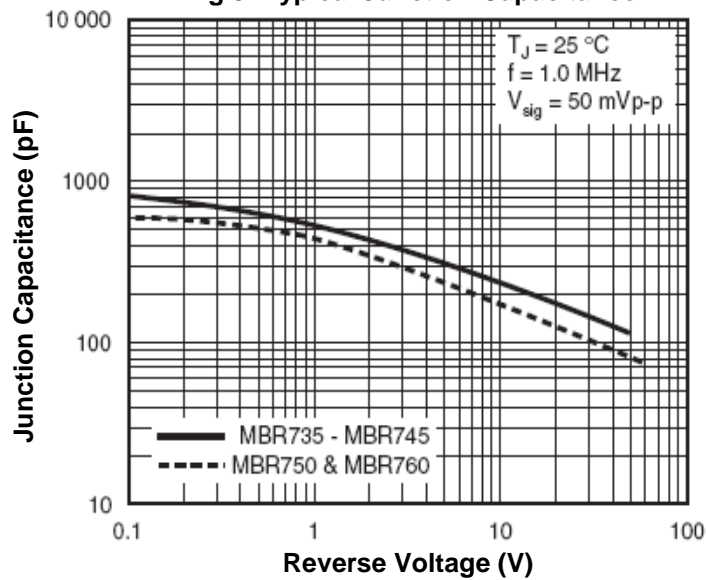


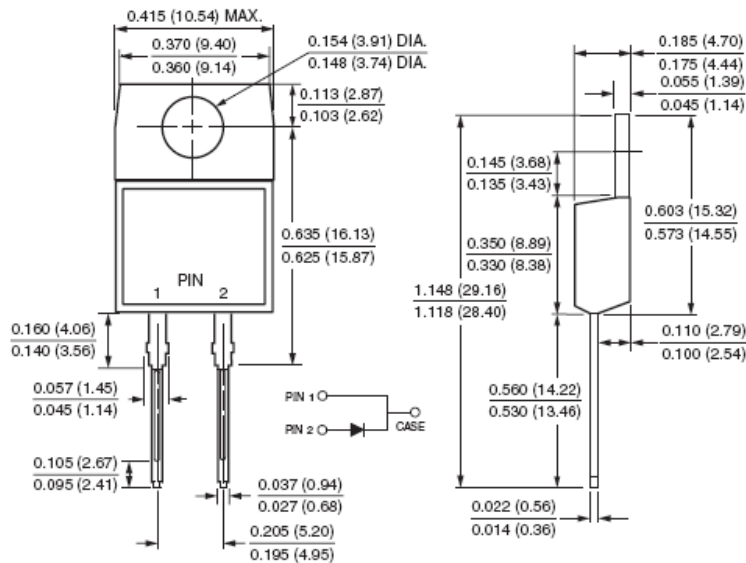
Fig.5- Typical Junction Capacitance



7.5A Schottky Barrier Rectifiers

MBR735 - MBR760

Dimensions in inches (mm)



TO-220AC

How to contact us

USA HEADQUARTERS

28040 WEST HARRISON PARKWAY, VALENCIA, CA 91355-4162

Tel: (800)-TAITRON (800)-824-8766 (661)-257-6060

Fax: (800)-TAITFAX (800)-824-8329 (661)-257-6415

Email: taitron@taitroncomponents.com

Http://www.taitroncomponents.com

TAITRON COMPONENTS INCORPORATED TAIWAN BRANCH

6F., NO.190, SEC. 2, ZHONGXING RD., XINDIAN DIST., NEW TAIPEI CITY 23146, TAIWAN R.O.C.

Tel: 886-2-2913-6238

Fax: 886-2-2913-6239

TAITRON COMPONENT TECHNOLOG SHANGHAI CORPORATION

SUITE 1503, METROBANK PLAZA, 1160 WEST YAN'AN ROAD, SHANGHAI, 200052, CHINA

Tel: +86-21-5424-9942

Fax: +86-21-2302-5027