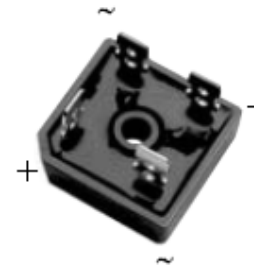


40A Glass Passivated Bridge Rectifier

Features

- Glass passivated chip junction
- Low reverse leakage current
- Low power loss; high efficiency
- Electrically isolated epoxy case for Max. heat dissipation



GBPC

Mechanical Data

Case:	GBPC, Molded plastic with heatsink, available in both low profile and standard case
Epoxy:	Plastic package has UL flammability classification 94V-0
Terminals:	Plated faston lugs or wire leads.
Polarity:	As marked on case
Mounting Position	See note 2
Mounting Torque	23 cm·kg (20in.-lbs) Max.
Weight:	21 grams

Maximum Ratings And Electrical Characteristics ($T_{amb}=25^{\circ}C$)

Symbol	Description	GBPC 40-005	GBPC 40-01	GBPC 40-02	GBPC 40-04	GBPC 40-06	GBPC 40-08	GBPC 40-10	Unit	Conditions
VRRM	Max. Repetitive Peak Reverse Voltage	50	100	200	400	600	800	1000	V	
VRMS	Max. RMS Voltage	35	70	140	280	420	560	700	V	
VDC	Max. DC blocking voltage	50	100	200	400	600	800	1000	V	
IF(AV)	Max. Average Forward Rectified Output Current	40.0							A	$T_c=50^{\circ}C$, See Fig.1
IFSM	Peak Forward Surge Current	400							A	8.3ms single half sine-wave superimposed on rated load (JEDEC method)
VF	Max. Instantaneous Forward Voltage drop per leg	1.1							V	IF(AV)=20A

40A Glass Passivated Bridge Rectifier

GBPC40-005 - GBPC40-10

Symbol	Description	GBPC 40-005	GBPC 40-01	GBPC 40-02	GBPC 40-04	GBPC 40-06	GBPC 40-08	GBPC 40-10	Unit	Conditions
IR	Max. Reverse DC Current At Rated DC Blocking Voltage per leg	5.0							μA	TC=25°C
		500							μA	TC=125°C
I ² t	Rating for Fusing (1ms<t<8.3ms)	660							A ² s	
C _J	Typical junction capacitance	400							pF	VR=4V, f=1MHz
R _{thJc}	Typical Thermal Resistance per leg	1.4							°C / W	Note 1
T _J ,T _{STG}	Operating Junction and Storage Temperature Range	-65 to +150							°C	

- Note:** 1. Thermal Resistance from junction to Case per leg.
2. Mounted on 229 × 102 × 117mm Al. finned plate.

Typical Characteristics Curves

Fig.1-Max. Output Rectified Current

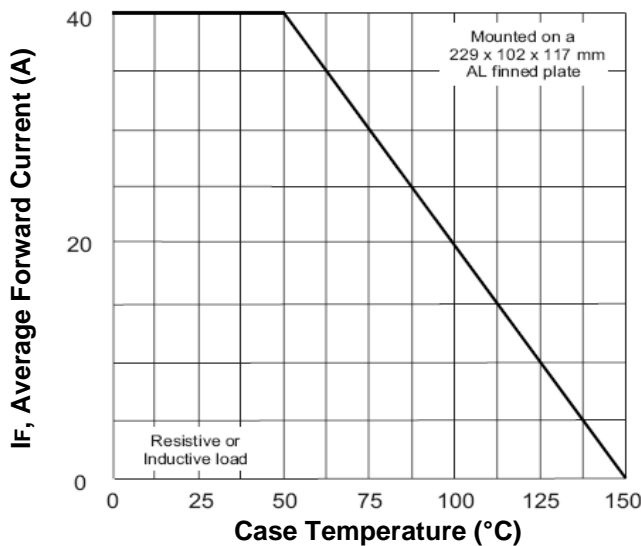
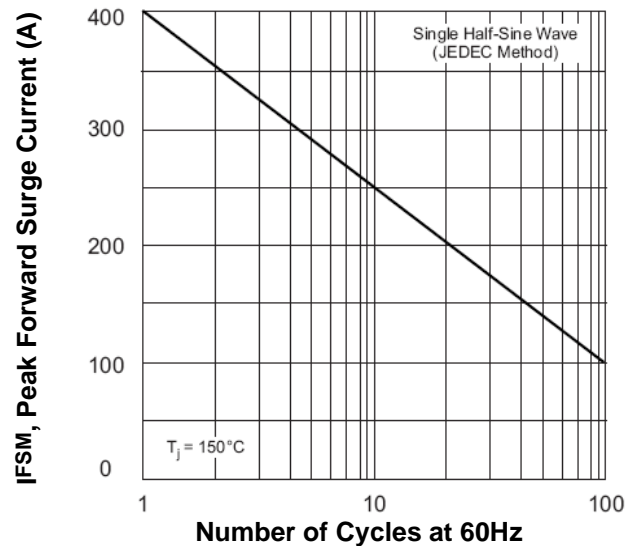


Fig.2-Max. Non-repetitive Peak Forward Surge Current per leg



40A Glass Passivated Bridge Rectifier

GBPC40-005 - GBPC40-10

Fig.3-Typical Instantaneous Forward Characteristic per leg

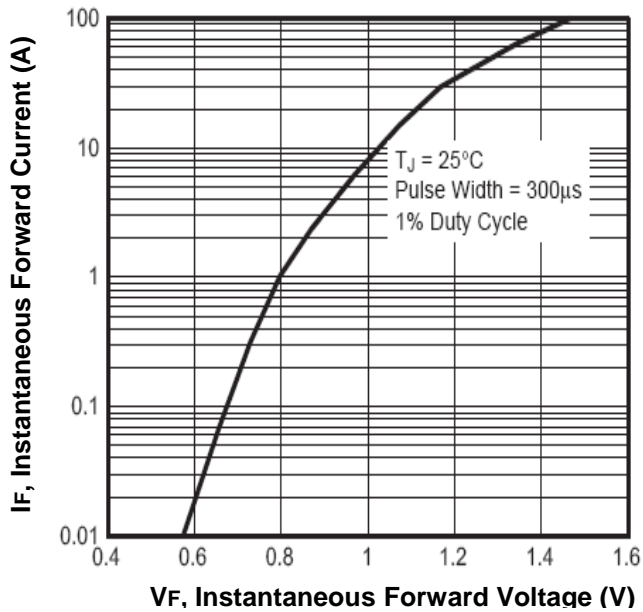


Fig.4-Typical Reverse Characteristics per leg

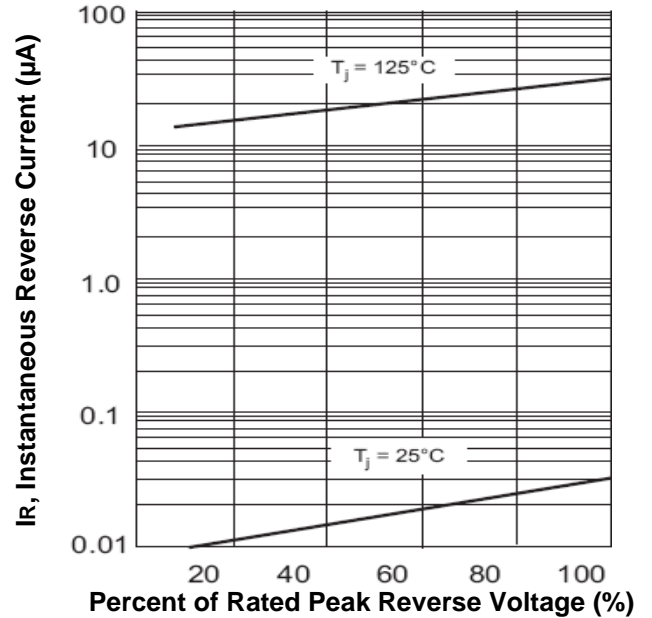
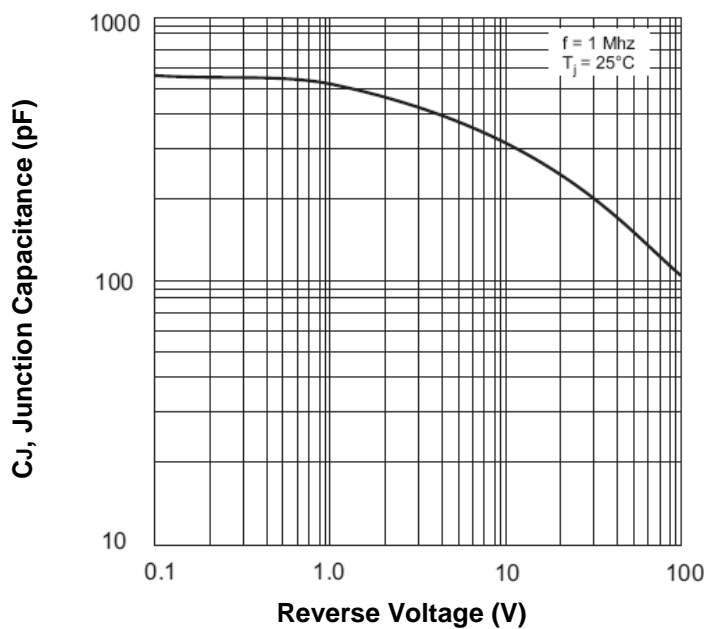


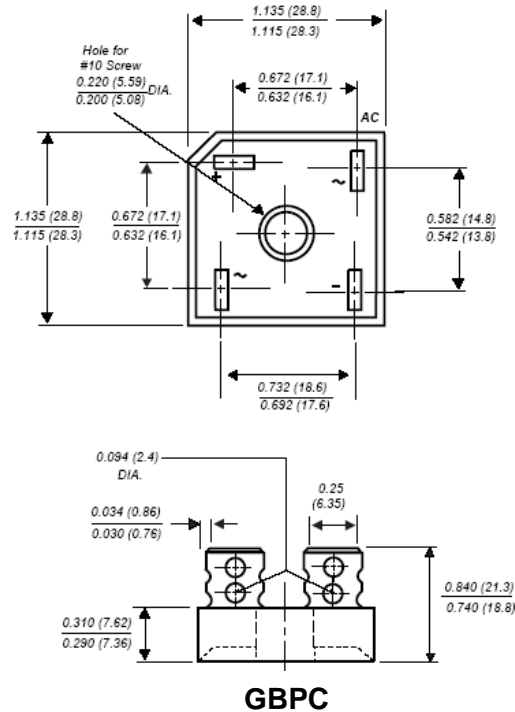
Fig.5-Typical Junction Capacitance per leg



40A Glass Passivated Bridge Rectifier

GBPC40-005 - GBPC40-10

Dimensions in inch (mm)



How to contact us

USA HEADQUARTERS

28040 WEST HARRISON PARKWAY, VALENCIA, CA 91355-4162

Tel: (800)-TAITRON (800)-824-8766 (661)-257-6060

Fax: (800)-TAITFAX (800)-824-8329 (661)-257-6415

Email: taitron@taitroncomponents.com

Http://www.taitroncomponents.com

TAITRON COMPONENTS INCORPORATED TAIWAN BRANCH

6F., NO.190, SEC. 2, ZHONGXING RD., XINDIAN DIST., NEW TAIPEI CITY 23146, TAIWAN R.O.C.

Tel: 886-2-2913-6238

Fax: 886-2-2913-6239

TAITRON COMPONENT TECHNOLOG SHANGHAI CORPORATION

SUITE 1503, METROBANK PLAZA, 1160 WEST YAN'AN ROAD, SHANGHAI, 200052, CHINA

Tel: +86-21-5424-9942

Fax: +86-21-2302-5027